

# PRINTRONIX®

## P8000 Line Matrix Printers



Flexible Design | Adaptable Functionality | Manageable Savings



## P8000 Cartridge Printers Deliver New Designs, Enhanced Convenience and Lower Operating Cost

Printronic introduces design enhancements and improved functionality with the P8000 Cartridge Printer series to achieve the broadest flexibility, greatest compatibility and lowest ownership cost of virtually any other print technology. The series builds upon the workhorse tradition of all Printronic line matrix technology delivering maximum uptime, low cost of ownership, and reliable performance. The P8000 series is the ideal solution for buyers looking to minimize operating expense without sacrificing output reliability, regardless of operating environment.

### FLEXIBLE DESIGN

Printronic modified its industry-leading line matrix technology to address evolving user requirements.

- **Modular enclosures** occupy a smaller footprint while delivering location and installation flexibility
- **Sheet metal construction** for increased durability and better acoustics
- **New user interface** with larger LCD screen, graphical display and intuitive menu navigation
- **Remote printer diagnostics** let you monitor printer status and remotely configure settings & firmware

### ADAPTABLE FUNCTIONALITY

The **P8000** Cartridge series adapts to almost any supply-chain or back-office environment.

- **USB 2.0, Serial, Parallel and Ethernet** connectivity included as standard features.
- **PowerPrint™** delivers improved print quality and print darkness on multi-part forms by increasing impact energy. Comes standard on P8000 printers with a 1,000 line-per-minute print speed.

### MANAGEABLE SAVINGS

The **P8000** Cartridge Printer is a smart purchase

- **Lowest cost of ownership** of any print technology.
- **Durable design minimizes** downtime related to unfavorable environmental conditions.
- **Backwards-compatible cartridge ribbons** reduce inventory management costs.
- **Energy efficient technology** lowers idle power consumption and boosts operating efficiency.



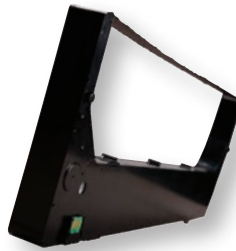
# Five Reasons Your Company Needs Line Matrix Printers

# 5

In a world of expensive to maintain laser printers it is smart to consider the latest advancement in line matrix cartridge printing before choosing a print technology. Printronix has consistently pioneered new innovations to ensure this technology remains highly competitive and relevant for today's printing applications. Here are five reasons to consider the latest generation of Line Matrix Cartridge printers.

## 1 Lowest Cost of Ownership

- The average lifespan of a line matrix printer is 7 to 10 years as compared to only 3 years for laser printers.
- Cartridge Ribbons are up to six times less expensive than laser toner cartridges.
- As print volume increases, consumable savings grow dramatically.
- Cartridge ribbons give users up to 20% improvement in consumable cost per page over spool type ribbons used by legacy line printers.



## 2 Productivity

- Line Matrix printers deliver unmatched, up-time and reliability.
- Document integrity is more easily maintained with continuous forms media as opposed to cut sheets.
- PrintNet Enterprise, our remote printer management utility, delivers visibility and remote control for all network connected devices.

## 3 Reliable Performance in Any Environment

- Line Matrix printers perform reliably in non-climate controlled environments where temperature, humidity and airborne contaminants cause form feeding and print quality issues for other print technologies.

## 4 Application Adaptability

- Printronix' OpenPrint technology allows printers to Plug & Play in PDF and PostScript, ERP environments.
- Many Independent Software Vendors provide label design software and ERP solutions that natively support the Printronix language for graphics, text and barcode images.
- Line Matrix remains the best technology for printing multi-part forms, oversize media, labels, card stock, and other non-typical media types.

## 5 Environmentally Friendly

- When compared to laser printers, Line Matrix Printers consume as little as 1/3rd the energy when printing, and 1/7th the energy when in standby mode.
- Throughout their life span, Line Matrix Printers will generate far less landfill waste from consumables, packaging and printer hardware.
- Cartridge ribbons emit none of the fine particulate emissions generated by laser printers.



DISTRIBUTION



AUTOMOTIVE



MANUFACTURING



TRANSPORTATION



FINANCIAL

# P8000 Line Matrix Printers



The flagship model in the series, the **P8000 Open Pedestal** is a dependable line matrix printer that delivers maximum uptime and lowest total cost of ownership. Its compact size makes it easy to move within your environment and is ready to plug into your network and start printing from day one.



PRINTER CABINET STYLE	Open Pedestal	
<b>Standard Features &amp; Options</b>	<b>P8005 / P8010 / LMPPLS</b>	
Integrated Print Management	Standard	
Ribbon Life Monitor	Standard	
Black back forms paper out sensor	Option	
Rear slide out paper drawer		
Cabinet front paper access		
Extended forms support doors		
High rear paper tray	Option	
Low rear paper tray	Standard	
Acoustic shroud	Option	
<b>Dimensions</b>	<b>With Basket</b>	<b>Without Basket</b>
Height	35.9" (911.8 mm)	35.9" (911.8 mm)
Width	25.8" (655.3 mm)	25.8" (655.3 mm)
Depth	29.1" (739.1 mm)	19.1" (485.1 mm)
Printer Weight	115 lbs (52.1 Kg)	115 lbs (52.1 Kg)
Shipping Printer Weight	165 lbs (74.8 Kg)	165 lbs (74.8 Kg)
<b>Environmental Noise</b>	<b>P8005</b>	<b>P8010</b>
Acoustic Noise (dBA) per ISO 7779	60.5	65.5
<b>PRINTER MODEL NUMBER</b>	<b>P8005</b>	<b>P8010</b>
<b>Print Speed</b>	<b>LPM, upper case/lower case characters</b>	
High Speed (Draft)	500/428	1000/856
Data Processing	375/300	750/600
Near Letter Quality	200/154	400/306
<b>Graphics Speed</b>	<b>Inches (mm) per minute</b>	
60 x 48 dpi	63 (1600)	125 (3175)
60 x 72 dpi	42 (1067)	83 (2108)
90 x 96 dpi	21 (533)	42 (1067)
<b>Paper Feed Speed</b>	<b>Inches (mm) per second</b>	
Speed	12 (305)	20 (508)

The **P8000ZT Zero Tear** is the specialized cartridge line matrix printer choice for customers using pre-printed and serialized documents that require print on demand, single form tear-off usability. The Zero Tear is designed to eliminate wasted forms and reduce operating costs.



### Open Pedestal Zero Tear

#### P8005ZT / P8010ZT / LMPPLS

Standard

Standard

Standard

#### With Basket

#### Without Basket

42.04" (1067.8 mm)

42.04" (1067.8 mm)

25.8" (655.3 mm)

25.8" (655.3 mm)

31.9" (810.2 mm)

19.1" (485.1 mm)

145 lbs (66 Kg)

N/A

190 lbs (86 Kg)

N/A

#### P8005ZT

#### P8010ZT

70

70

#### P8005ZT

#### P8010ZT

#### LPM, upper case/lower case characters

500/428

1000/856

375/300

750/600

200/154

400/306

#### Inches (mm) per minute

63 (1600)

125 (3175)

42 (1067)

83 (2108)

21 (533)

42 (1067)

#### Inches (mm) per second

12 (305)

20 (508)

The **P8000 Enclosed Cabinet** is the preferred choice for print environments where acoustic emissions need to be kept to a minimum. Its modular design, wide selection of paper handling options, and reliable performance make it ideal for office environments or noise adverse areas running large, unattended print applications.



### Cabinet

#### P8205 / P8210

#### P8215 / P8220

Standard

Standard

Standard

Standard

Option

Option

Option

Option

Option

Option

Option

Option

#### Cabinet

#### Cabinet

40.5" (1028.7 mm)

40.5" (1028.7 mm)

27" (685.8 mm)

27" (685.8 mm)

29" (736.6 mm)

29" (736.6 mm)

200 lbs (90.7 Kg)

200 lbs (90.7 Kg)

265 lbs (120.2 Kg)

265 lbs (120.2 Kg)

#### P8205

#### P8210

#### P8215

#### P8220

50

50

52

55

#### P8205

#### P8210

#### P8215

#### P8220

#### LPM, upper case/lower case characters

500/428

1000/856

1500/1289

2000/1700

375/300

750/600

1125/900

1500/1200

200/154

400/306

600/459

800/615

#### Inches (mm) per minute

63 (1600)

125 (3175)

187 (4750)

250 (6350)

42 (1067)

83 (2108)

127 (3226)

167 (4242)

21 (533)

42 (1067)

61 (1549)

83 (2108)

#### Inches (mm) per second

12 (305)

20 (508)

25 (635)

39 (991)





# CONNECTIVITY

## Reliable Connectivity, Seamless Installation and Robust Remote Printer Management



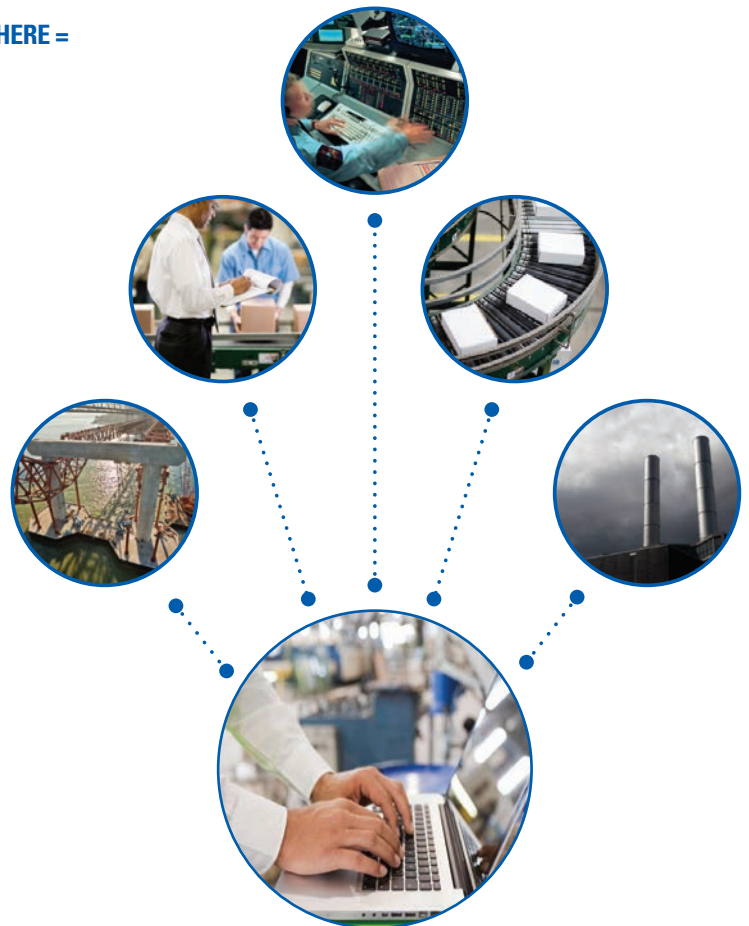
### CONTROL YOUR ENTIRE GLOBAL PRINTING NETWORK FROM ANYWHERE =

Achieve higher efficiency and improve your company's productivity with PrintNet Enterprise™ remote printer management software. PrintNet Enterprise is a valuable time-saving tool for your mission critical operation.

**PRINTNET ENTERPRISE =** Total control. Your worldwide print operation is at your fingertips with PrintNet Enterprise. By combining the recommended integrated Ethernet adapter and Java-based software, remote printer management extends your reach from anywhere you have a computer and connectivity.

- Configure and monitor printers from any desktop computer and any location in the world
- Designate events and be alerted to printer issues with email, pager or mobile phone alerts
- Complete compatibility with any Printronix product when equipped with the optional Ethernet

**PRINTNET WEBPAGE =** Printer management made simple. You now have access and control of your printer through any internet browser. Full configuration of printer menus, including uploading and downloading of saved configurations from your PC. Easy file management for quick downloads and uploads of forms, fonts, and logos. Printer status monitoring for real time updates. Diagnostics capabilities including job capture and firmware download.



# ORACLE SAP LINUX WINDOWS

# COMPATIBILITY

## OpenPrint™ – The World's First PostScript and PDF Line Matrix Printer



Printronix offers the world's only PostScript and PDF® line matrix printer. The OpenPrint Cartridge Series allows the printer to communicate directly with today's modern enterprise resource planning (ERP) environments, including Oracle®, SAP®, Linux® and Windows®. With OpenPrint, PDF or PostScript files can be sent directly to the printer without hard-coding or special drivers. Output quality is improved because it utilizes PostScript image and graphic capabilities as well as sure scan barcode software.

The OpenPrint platform offers our customers an unprecedented opportunity to implement the industrial strength of line matrix technology within most ERP environments. The easy and instant connectivity of PostScript and PDF files enables IT administrators to quickly deploy new forms and business documents to Printronix line matrix printers throughout ERP enterprise operations. OpenPrint technology provides improved fine point text and fonts - from six point to poster size. It also improves the rendering of barcodes within the printer resulting in enhanced form readability and utility.



# P8000 Product Specifications

## CONNECTIVITY/INTERFACES

Standard USB 2.0 and Serial RS-232  
Ethernet - 10/100 Base T  
Parallel - IEEE-1284 Centronics

## CHARACTER PITCH (CHARACTERS PER INCH)

10, 12, 13.3, 15, 16.7, 17.1, 20

## LINE SPACING (LINES PER INCH)

6, 8, 10.3, n/72, n/216

## GRAPHICS RESOLUTION

180 dpi Horizontal, 144 dpi Vertical (max)

## DOT SIZE

16.7 mil (.42mm)

## EMULATIONS

Standard LP+ (Printronix P-Series, P-Series XQ, Serial Matrix, IBM ProPrinter III XL, Epson FX-1050) ANSI, PCL 2, TN5250/TN3270, Graphics Emulation PGL & VGL

Optional IPDS, DEC LG,

OpenPrint Standard Ghostscript Postscript (Level 3 compatible), PDF (Level 1.7 compatible), Printronix PJJ

## CHARACTER SETS

99 plus character sets including ECMA Latin 1, DEC Multinational, IBM Code Page 437 and 850, OCR A, OCR B, UTF8 encoded Unicode

## CHARACTER STYLES

Bold, italic, double wide, double high, overstrike, underline, subscript and superscript

## FONTS

NLQ Serif, NLQ Sans Serif, Data Processing, High Speed, OCR A, OCR B

## BARCODES

30 resident symbologies, including Code 39, EAN 8/13, UPC A/E, Intelligent Mail, Postnet, Royal Mail, Interleaved 2 of 5, PDF 417, Data Matrix

## PRINTER SOFTWARE

Printronix PrintNet Enterprise remote management software, SAP device support

## PRINTER DRIVERS

Microsoft Window XP/Vista/2003/2008/7, Linux

## POWER VOLTAGE

AC input range 100-240 VAC, 50/60 HZ

## POWER CONSUMPTION (TYPICAL-MAXIMUM)

• P8005 / P8205 280 watts Max 320 watts  
• P8010 / P8210 300 watts Max 320 watts  
• P8215 435 watts Max 601 watts  
• P8220 450 watts Max 601 watts

## POWER CONSUMPTION

Less than 5 watts

## OPERATING TEMPERATURE

Environmental Operating Temperature 50° to 104° F, 10° to 40° C

## PAPER TYPE

Continuous, fan folded, edge-perforation

## PRINT WIDTH

13.6" (345mm)

## MEDIA COPIES

Up to 6 part; up to 4 part for Zero Tear models

## MEDIA LENGTH

3" (76mm) to 12" (305mm)

## MEDIA THICKNESS MULTI-PART

0.025" (0.64mm) max

## MEDIA WIDTH

- 3" (76mm) to 17" (432mm)
- For Zero Tear models:
  - 7.5" (191mm) to 12" (305mm) for up to 4 part carbon and 6 part carbonless
  - 7.5" (191mm) to 16" (406mm) for up to 3 part carbon and 4 part carbonless

## MEDIA WEIGHT SINGLE PLY

- 15 lb. Bond to 100 lb. Tag (56 to 163 gm/M<sup>2</sup>)
- For Zero Tear models:
  - 18 lb. Bond to 100 lb. Tag (67.7 to 163 gm/M<sup>2</sup>) for forms up to 12" (305mm) in width
  - 20 lb. Bond to 100 lb. Tag (75.2 to 163gm/M<sup>2</sup>) for forms up to 16" (406mm) in width

## MTBF

10,000 hours at 25% duty cycle and 25% page density

## CONSUMABLE/RIBBONS

Standard Life Cartridge Ribbon 17,000 pages

Extended Life Cartridge Ribbon 30,000 pages

Page yield based on ISO LSA Page, 8.5" x 11" letter-size, approximately 5% coverage



Visit the Printronix website  
for product specifications  
on OpenPrint models:  
[www.printronix.com](http://www.printronix.com)